

# THE KID'S CONNECTION

## Sower and seed word find

Find the **BOLDED** words hidden in the puzzle and use the leftover letters to fill in the blanks.  
**CLUE:** What do the seeds represent in this parable?

GGSSCORCHEDT  
 RRICHOBIRDSH  
 EOXAOSPDTWOI  
 WCTMKPATHIIR  
 HKYEERRHOTLT  
 OYSWDAATURHIY  
 EONCENBNNETF  
 VHEARGLDSRTO  
 EOASOWERFELL  
 RFRUITSEEDD  
 RDSNPRODUCED

And he spoke to them at length in **PARABLES**, saying: "A **SOWER** went out to sow. And as he sowed, some **SEED** fell on the **PATH**, and **BIRDS CAME** and ate it up. Some fell on **ROCKY** ground, where it had **LITTLE** soil. It **SPRANG** up at **ONCE** because the **SOIL** was not deep, and when the **SUN** rose it was **SCORCHED**, and it

Matt 13: 1-23

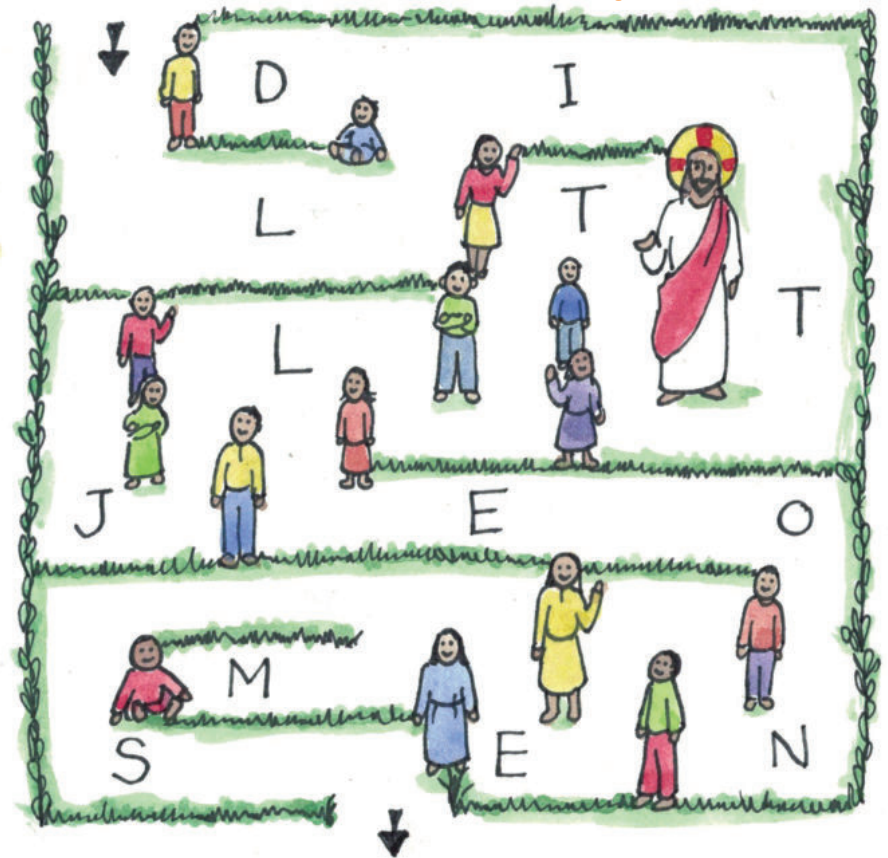


**WITHERED** for lack of roots. Some seed **FELL** among **THORNS**, and the thorns **GREW** up and **CHOKED** it. But some seed fell on **RICH** soil, and **PRODUCED FRUIT**, a **HUNDRED** or **SIXTY** or **THIRTYFOLD**.

**WHOEVER** has **EARS** ought to **HEAR**."

Find your way through the maze and use only the letters on the right path to fill in the rest of Our Lord's words.

## "God reveals His ways" maze



Jesus exclaimed: "I give praise to you, Father, Lord of heaven and earth, for although you have hidden these things from the wise and the learned, you have revealed them to